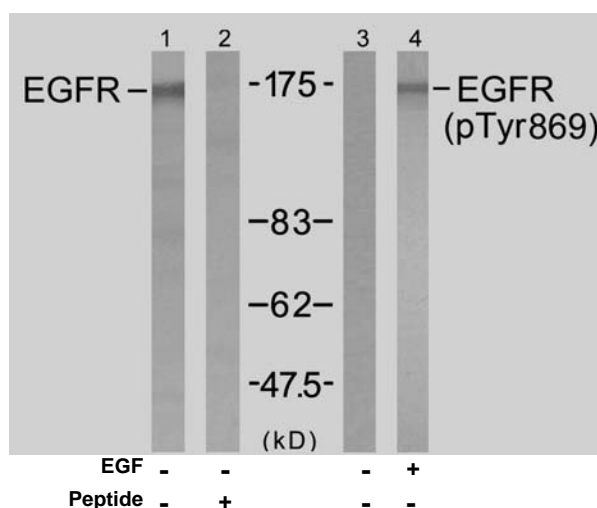


Rabbit anti EGFR (pTyr869)

- Catalog Number:** pAP11229
Amount: 100µl (for 10 Western Blotting)
Swiss-Prot No. : P00533
Form of Antibody: Rabbit IgG in phosphate buffered saline (without Mg²⁺ and Ca²⁺), pH 7.4, 150mM NaCl, 0.02% sodium azide and 50% glycerol.
Storage/Stability: Store at -20°C/1 year
Immunogen: The antiserum was produced against synthesized phosphopeptide derived from human EGFR around the phosphorylation site of tyrosine 869 (K-E-Y^P-H-A).
Purification: The antibody was affinity-purified from rabbit antiserum by affinity-chromatography using epitope-specific phosphopeptide. The antibody against non-phosphopeptide was removed by chromatography using non-phosphopeptide corresponding to the phosphorylation site.
Specificity/Sensitivity: EGFR (phospho-Tyr869) antibody detects endogenous levels of EGFR only when phosphorylated at tyrosine 869.
Reactivity: Human, Mouse, Rat
Applications: WB: 1:1000
References: Inoue A, et al. (2005) PLoS Med; 2(1): e13
 Sun H, et al. (2004) EMBO J; 23(1): 100-110
 Kanner SB, et al. (1991) Mol Cell Biol; 11(2): 713-720
 Wu TT, et al. (1998) Mol Biol Cell; 9(7): 1661-1674
 O'Rourke DM, et al. (1997) Proc Natl Acad Sci U S A; 94(7): 3250-3255
 Goldstein DJ, et al. (1994) J Virol; 68(7): 4432-4441



Western blot analysis of extract from A431 cells untreated or treated with EGF (200ng/ml, 5min), using EGFR (Ab-869) antibody (AP21222, Lane1 and 2) and EGFR (phospho-Tyr869) antibody (pAP11229, Lane 3 and 4).

For Research Use Only

Contact & Ordering Information: Angio-Proteomie, 11 Park Drive, Suite 12, Boston, MA 02215, USA. Fax: (480) 247-4337, angioproteomie@gmail.com